

## First Parish in Waltham Newsletter

*No matter who you are or  
where you are on life's journey,  
you are welcome here.*

The steeple is being lit this week in memory of  
D. J. Smith (known as "Jim");  
lover of music and sharing it with friends and  
family.

Nancy Lawrence



### This Week at . . .



### Upcoming Sunday Services

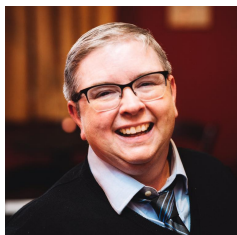
### Upcoming Events

### Messages from Our Community

### Partner Organizations and Other News

### First Parish in Waltham Contacts

## Upcoming Sunday Services



**Sunday, Nov. 3 at 10.30am**  
**Bear Witness: Save Lives**

As we build the Beloved Community, it is vital that we bear witness to one another, acknowledge and accept what we share, and be present with one another with empathy that honors our different life experiences. CB will share about the spiritual practice of bearing witness and trusting others bear witness to us as an intentional part of moving toward justice and liberation.

CB Beal (they/them) specializes in facilitating learning experiences that involve issues of marginalization, oppression, and privilege; helping participants hold the complexities of our lives in perspective, and co-creating a safe[r] brave[r] space within which people can be challenged to learn and grow.

Please note that well fitted KN95 or N95 masks are **REQUIRED** in the building for both worship and the workshop following in order to keep our guest as safe as possible. If you cannot wear a mask, you are invited to join us on zoom this week. If you need a mask, we will have some at both main entrances to the building.

Lunch (all gluten free) will be served in the Harrington Room between worship and the workshop in Whitcomb Hall. The Harrington Room and the Chapel will be the only places in the building where we can unmask to eat, drink, etc. Special thanks to Deb José for organizing lunch with a great group of volunteers!

---

### This Week in Faith Formation

This week our Chalice Children and Jr. Youth groups will each dive into a new theme of the month: Practice of Repair. Sunday morning, each group will use games and an art project to explore democracy as a tool of repair and how democracy is a tool of correcting/repairing systems and communities in which only a few have a say.



Leading Chalice Children - Vivian Siegfried and Zee Campbell  
Leading Jr. Youth - April Rosario and Ace Gullotti

---

If you wish to join services virtually, please contact our Office Administrator.  
[office@walthamuu.org](mailto:office@walthamuu.org)

## Upcoming Events

### Bear Witness Workshop with CB Beal November 3, 2024 1-5 pm

In this fun, lively, and interactive workshop, we will practice three skills of Preemptive Radical Inclusion: bearing witness, not believing everything we automatically think, and being curious about our own thoughts and where they came from.

CB Beal (they/them) specializes in facilitating learning experiences that involve issues of marginalization, oppression, and privilege; helping participants hold the complexities of our lives in perspective, and co-creating a safe[r] brave[r] space within which people can be challenged to learn and grow.

The live version of the workshop will take place in Whitcomb Hall. Zoom participation is available in the Harrington Room and wherever you have internet access. We will use our worship zoom link. Please reach out if you need it!

**Please note that well fitted KN95 or N95 masks are REQUIRED in the building for both worship and the workshop in order to keep our guest as safe as possible. If you cannot wear a mask, you are invited to join us on zoom. If you need a mask, we will have some at both main entrances to the building.**

### Book Club

November 21, 2024  
1:00 pm  
Harrington Room and online

*The Mountains Sing*, by Nguyen Phan Que Mai

*The Mountains Sing* tells an enveloping, multigenerational tale of the Trần family, set against the backdrop of the Việt Nam War. Trần Diêu Lan, who was born in 1920, was forced to flee her family farm with her six children during

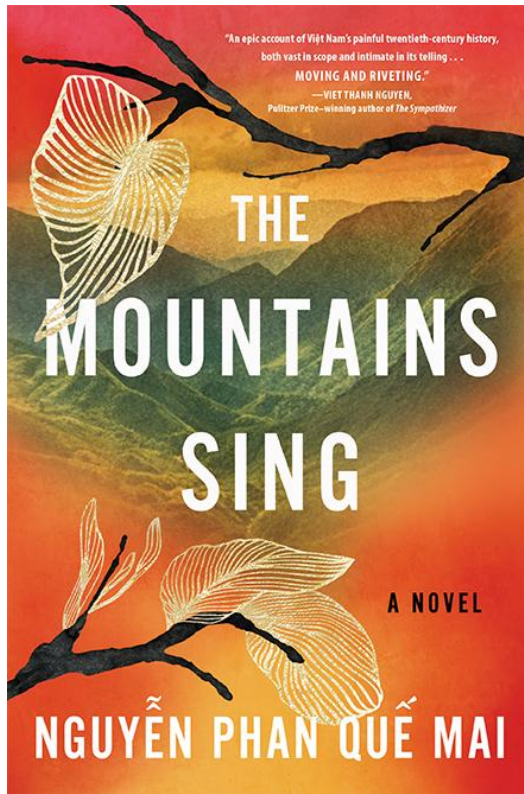
**What does it mean to be a sponsor for a [Jones Partnership](#) grant applicant?**

Find out **Sunday, Nov. 10 from 12 noon to 1pm** in the Harrington Room.

We're hoping to see past and current sponsors, prospective sponsors, and the curious.

Contact Jones Partnership Committee members: Jim Ohm, Muffy Young, Peter Babi, Candace Holman or Marty Ahrens if you have any questions.

the Land Reform as the Communist government rose in the North. Years later, in Hà Nội, her young granddaughter, Hương, comes of age as her parents and uncles head off down the Hồ Chí Minh Trail to fight in a conflict that tore apart not just her beloved country but also her family.



### Meet The Cat Connection Sunday, Nov. 10

The Cat Connection of Waltham, a Jones Fund grant recipient, will have a “get to know you” table during coffee hour in Whitcomb Hall on November 10. Please stop by to ask questions about our shelter and programs. We will also be happily taking cat food donations, especially for kitten food – a perennial need. (Purina is preferred, but others also gratefully accepted, cans or dry.)

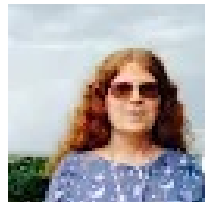
## Messages from our Community

### One Thing You Can Do:

This Sunday we had an excellent lay-led service from our Worship Committee and a fabulous Fall Fair organized by our Director of Faith Formation, April Rosario, and the Religious Education Committee. We had new folks at the service and Whitcomb Hall was bustling with more folks than I’ve ever seen during the Fall Fair.

Let’s remember to thank the folks who made these events possible, and offer to help out with the next events when we can!

Elisse Ghitelman  
Outreach Commissioner



### Who is the Committee on Ministry (COM), and what do they do?

Our Committee on Ministry (COM) is available year round to support our community. We strive to support the Mission and Vision of First Parish in Waltham\* by living our Relational Covenant values of *Creating an Uplifting Environment*, *Working Together Harmoniously*, and *Resolving Conflict Compassionately*.

Some of the functions of our COM include:

- Serving as thought partners to the minister
- Fostering a culture of communication in the congregation and its ministries, recognizing that communication is multifaceted and complex
- Facilitating healthy and respectful feedback within the congregation
- Providing guidance and resolution in conflict engagement within our beloved congregational community
- Assessing how programs of the congregation align with our mission
- Participating in the minister evaluation process with the Board

In June 2024 the COM worked with our interim ministers to create the *Maintaining and*



### Waltham Buddhist Meditation Group

Thursday evenings (with some exceptions)  
In the Chapel  
7 pm to 8:30 pm

We do seated silent meditation, walking meditation, and a short teaching (or sharing) followed by a discussion.

All are welcome to attend. Please reach out with any questions.

[ElisseGhitelman@walthamuu.org](mailto:ElisseGhitelman@walthamuu.org)

If you would like meditation instruction, please reach out so that we can have someone meet with you at 6:30.

Repairing Covenantal Bonds document, to provide a tool for our congregation to use when navigating challenging or strained relationships. **The COM is working to have this resource added to our website soon.**

Please reach out to us if we can support you! You may contact us at [ministry.committee@walthamuu.org](mailto:ministry.committee@walthamuu.org), or reach out to any individual committee member:

- Jodi Anderson (Convener)
- Daphne Blount
- Marianne Cutter
- Kris DiNardo
- Dimitry Zarkh

\*Mission and Vision

<https://walthamuu.org/about/our-mission-and-vision/>

## Partner Organizations and Other News



### From Waltham Fields Community Farm:

As we begin to wind down for the season, we are inviting the community to join us at our last drop-in volunteering days at 9am on Friday and Saturday 11/1, 11/2. The focus will be on digging up extra root crops and gleaning our fields of excess "imperfect" vegetables to sort and go to area food pantries. Email Marla at [volunteer@communityfarms.org](mailto:volunteer@communityfarms.org) with questions, or just show up! (If you organize a group of 5 or more, please let me know in advance.)

Please note:

There are still "extend the season" CSA farm shares available at Waltham Fields. Choose from a one-pickup Thanksgiving share, 3-pickup Extended Season, mushrooms as well ~ more info: <https://communityfarms.org/csa/csa-overview>



### Birthdays Among Us!

The Membership Committee is helping us celebrate birthdays as a congregation! Please let us know yours by emailing Brenda Asis: [membership.commissioner@walthamuu.org](mailto:membership.commissioner@walthamuu.org)

Ron Adams 10/31

Michael Carmody 11/4

Carla Hillyard 11/16

Kris DiNardo 11/18

Mary Ahrens 11/23

Plum Kennard 11/27

Ashley Kamal 11/30

Rev. Elka Carrier-Ladd 11/30

## Staff Team

### Parish Minister

Rev. Elizabeth Carrier-Ladd

### Office Administrator /

Music and Choir Director

781.899.0174

[revelka@walthamuu.org](mailto:revelka@walthamuu.org)

**Director of Faith Formation**

April Rosario

508.813.3343

[april.rosario@walthamuu.org](mailto:april.rosario@walthamuu.org)

Emma Campbell

781.893.6240

[office@walthamuu.org](mailto:office@walthamuu.org)

or

[musicdirector@walthamuu.org](mailto:musicdirector@walthamuu.org)

**Facilities Coordinator**

KJ Robertson Jr.

781.893.6240

[kj@walthamuu.org](mailto:kj@walthamuu.org)

## Board Members

**President, Board of Managers**

Deb Jose

[president@walthamuu.org](mailto:president@walthamuu.org)

**Assistant Treasurer**

Dan DeHainaut

[asst.treasurer@walthamuu.org](mailto:asst.treasurer@walthamuu.org)

**Clerk**

Peter Duane

[clerk@walthamuu.org](mailto:clerk@walthamuu.org)

**Community Outreach Commissioner**

Elisse Ghitelman

[outreach.commissioner@walthamuu.org](mailto:outreach.commissioner@walthamuu.org)

**Finance**

Janet Riley

[janet.riley@walthamuu.org](mailto:janet.riley@walthamuu.org)

**Membership**

Brenda Asis

[brenda.asis@walthamuu.org](mailto:brenda.asis@walthamuu.org)

**Music and Worship Commissioner**

Bethany Templeton Klem

[bethany.klem@walthamuu.org](mailto:bethany.klem@walthamuu.org)

**Property**

Walter Beebe-Center

[property@walthamuu.org](mailto:property@walthamuu.org)

**Religious Education Commissioner**

Pam Penton

[pam.penton@walthamuu.org](mailto:pam.penton@walthamuu.org)

**Treasurer**

Dan Taylor

[treasurer@walthamuu.org](mailto:treasurer@walthamuu.org)

**The mission of First Parish in Waltham**

is to be a caring, inclusive, spiritual community committed to using free inquiry and the power of love to achieve peace, justice, and a sustainable world.

Stay connected on our Website, Facebook Page, or on Instagram!  
Like and follow us to get updates and news!



Waltham UU Facebook Page



Waltham UU Webpage





Try email marketing for free today!