



## First Parish Waltham Newsletter

*No matter who you are or  
where you are on life's journey,  
you are welcome here.*

**50 Church St, Waltham MA 02452 | 781.893.6240**  
**office@walthamuu.org | www.walthamuu.org**

### **Upcoming Services:**

**Feb 11 - 10:30 AM**  
**"All Things Wise and Wonderful"**  
**Rev. Megan Lynes preaching**  
**\*\* ONLINE service only!! \*\***

Imbolc, a Celtic festival in early February, signifies the shift from winter to spring, coinciding with lambing season. This service centers on the stories and lessons of James Herriot, the celebrated British veterinarian. Drawing inspiration from his work among the farming communities of the Yorkshire countryside, we will explore themes of resilience, humor and hope.

**\*\* Our service will be held online only due to the RACE Cancer Foundation road race that will shut down roads all around First Parish during our usual worship time. \*\***

**Feb 18 - 10:30 AM**  
**"The Stories We Tell: Living the Beloved Community"**  
**Rev. Christana Wille McKnight preaching**

The Beloved Community is a dream that the Rev. Dr. Martin Luther King made famous, but it is also an inspiration to who we can become - individually and together. This Sunday we will be reflecting on how the stories we tell shape our understandings of where we have come from, and how we can bring our values more fully into the communities we are building for the future. (Rev. Christana Wille McKnight is the Island Minister and Beloved Community Project Manager at Star Island, a UU/UCC Conference Center off the coast of New Hampshire.)

**Feb 25 - 10:30 AM**  
**Regie O'Hare Gibson preaching**

Poet, Performance Artist and Playwright Regie O'Hare Gibson, a frequent and beloved pulpit guest, will lead our worship service as we close out February.

Following the service, Regie O'Hare Gibson will lead a participatory workshop open to all, that will include storytelling, writing and music making. The RE Committee has brought Regie's workshop back by popular demand, and we very much hope you can come!

---

**A memorial service to honor the life of Roland Peterson** will be held in our sanctuary and on Zoom on Sunday, February 25th at 3 PM, officiated by Rev. Megan Lynes. A reception will follow in Whitcomb Hall.

Roland became a member of First Parish with his wife Lois and their children in the early 70's. He was a faithful participant in all aspects of parish life through the years, and is already greatly missed. The family warmly invites you to a celebration of his life.

---



### **"For This Time" - Thoughts from Deborah Weiner Transitional Ministry Associate**

#### **Believe**

As some of you know, I am a big fan of the TV show "Ted Lasso," and particularly of Ted's embrace of the *possibilities* that exist - even for a down-on-its-heels soccer club - to be more than, better than, they have ever been before. It all comes from believing that such things are possible.

It's not always easy to get in the mindset of people who believe that even the impossible is possible...but as Harold Hill taught us in "The Music Man," the 'think system' can sometimes work miracles and bring huge and wonderful changes even when we don't expect them.

Change has been all around us at First Parish in Waltham. For the last eighteen months you have worked with dedication and trust on understanding your history and behaviors, on developing a new mission and a relational covenant, on articulating several compelling vision statements for the congregation. You've dug into learning about how to more effectively communicate and resolve differences with one another...and you have entered into ministerial search for your next settled minister!

A few people have shared with me that they've heard conversation about that search process, as folks have wondered out loud about how it will all turn out. "Who would want to come to a congregation with only 100 members," someone asked. Someone else expressed concern that given all the transitions you've experienced since the pandemic, there wouldn't be much interest.

I'm here to suggest a different narrative. It turns out that there were plenty of folks interested in this congregation! It turns out that your search committee - who have been doing AMAZING work - have had great conversations with a number of those who expressed interest, and have invited three to pre-candidating weekends that will occur (all at other churches) in February or March. In other words: we all should BELIEVE that there will be a good outcome, with a recommendation from the Search Committee of a candidate for settled ministry, later in the spring! And then when it's time to vote on that candidate, our members will decide together. (If you've been pondering whether to become a member of First Parish, let this be a great reason!)

Nothing happens from just believing, of course: there's lots of commitment, dedication, hard work, and stick-to-it-iveness (what a word!) that supports those beliefs. But friends - there are great things on the horizon, just as there are wonderful things occurring right now. I hope we'll keep believing!

In faith, with love,

Deb

---



### **Reflections from your Music Director - Emma Campbell**

For many of us looking forward to spring, it is the arrival of new life that lets us know it has appeared. New shoots and leaves, baby lambs....

Having just read the reviews of the Grammy Awards (it is Monday morning) I am wondering if perhaps spring has finally arrived for

Tracy Chapman. "Fast Car" was a hit in 1988, and at the age of 14 I was aware that her music was amazing - so different from anything else I had heard. She disappeared from the British music scene as quickly as she arrived, and I wondered why. Her deep voice, being a person of color, and rumors that she was gay, in addition to her country music influences were never going to help her win over the British public. Yet it would appear that her incredible sound was not entirely embraced in the US either.

With Deb Weiner's service from yesterday still ringing in my ears, I am thinking about a CD featuring Mickey Guyton that is often playing in our car. Mickey became the first Black nominee for Best Country Album at the Grammys in 2022 with "Remember Her Name." I invite you to click [here](#) and listen to a track that is one of my favorites.

So often, the women's suffrage movement in the US appears to be connected with white, upper-class women. And the idea of the "women's movement" of the 70's also conjures white faces for many people. This was never the whole story. Let's make sure, in this era of collective liberation, that it is spring for all women. How? One way is by making a choice to actively support black-owned businesses. A link to a list to get you started can be found [here](#). You can start shopping right from your armchair. (The sparkly pants I wore on Christmas Eve came from House of Culture in this list!)

Yours in Music,  
Emma

---

### **Secret Valentine Exchange!** ***From Pam Penton, Religious Education Commissioner:***



At our service on January 28 everyone was invited to take a red heart and write their own name on it. During the Time For All Ages, we placed that heart in the baskets that the UU Explorers brought around. At the end of the service, we chose a new heart as our Secret Valentine,

If you forgot to pick up a heart for your Secret Valentine, please email Pam at [pjpenton@gmail.com](mailto:pjpenton@gmail.com) to get your assignment.

**The next step?** Over the next two weeks you can make one or two cards or notes (materials available at Welcome Table or use your own) and return it at another time on the Welcome Table or find another way to deliver a warm greeting to your Secret Valentine. On February 18 please reveal yourself and get to know your secret valentine a little better. People of all ages are encouraged to participate!!

---

### **News from the Search Committee**

Over the coming weeks, the Search Committee will be spending weekends getting to know three ministerial pre-candidates while they get to know us. Assuming all goes well, we hope/expect to identify a final candidate at the end of March. We look forward to sharing the candidate's name and some background after other details are completed and their churches are notified. This is likely to occur at some point in mid-April (or slightly later). And then comes Candidating Week - and this is where YOU come in!



### **Mark your calendars!**

We are planning a week of candidating activities beginning on **Friday, May 10** with services led by our candidate on May 12 and May 19 and a congregational vote after the service on May 19.

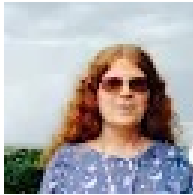
**You must be a member of First Parish to vote for our next settled minister!** Here is your invitation to consider joining, if you are not a member

already! Speak to Rev. Megan or someone on the membership committee if you are feeling ready to sign the membership book.

Brenda Asis, event planner extraordinaire, has graciously agreed to coordinate the week's various activities. If you have suggestions for meet-the-candidate events or other connections that you think our ministerial candidate should make, please contact us at [search@walthamuu.org](mailto:search@walthamuu.org) and/or Brenda at [brenda.asis@walthamuu.org](mailto:brenda.asis@walthamuu.org).

We thank you for your continuing confidence in our team and your support as we move toward announcing a candidate for our settled ministry!

Your Search Committee: Alex, Bill, Daphne, Katie, and Marty



### One Thing You Can Do

After Deb Weiner's sermon "Ain't I A Woman" at church this Sunday, Feb. 4, I was motivated to watch [Amanda Gorman's speech at President Biden's Inauguration](#) on Jan. 21, 2021 again. I suggest you re-watch it yourself for its beauty and inspiration. It gives me more hope for our future.

- Elisse Ghitelman, Outreach Commissioner



Friday February 9th, 2024 6:00pm

Italian cuisine is our inspiration!

Risotto, Pesto, Seafood, Beautiful Salads, Polenta,  
Lasagna, Arancini (rice balls, mmm), Tortellini,  
Gelato, Cannoli, Espresso

It's a casual, family-friendly potluck meal  
We'd love your company even if you just want to eat & chat  
Bring your favorite games or play with ones at FP  
At the end of the evening, we clean up together

Come at any time, for any part of the evening. Need a ride?  
We may be able to help. Special diet? It's best to bring your own food.  
Need info? Contact Martha Gallagher!

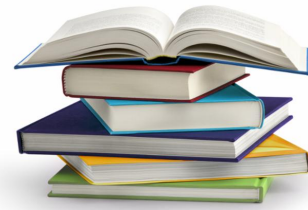


**First Parish Book Club**  
**February 15, 2024**

## **1:00 PM in the Harrington Room and over Zoom**

### **A Woman is No Man**

By Etaf Rum  
Published 2019



All are welcome to join us in reading this book,  
and share in our discussion on Feb 15th!

---

### **Would you like to join a short term Small Group? Led by Rev. Megan Lynes**

This group is designed to meet for four consecutive Wednesdays in the Chapel  
from noon to 1:30

March 13, 20, 27, April 3rd

The theme will be exploring what it means to be mortal and how to live into Mary  
Oliver's dream of "one wild and precious life." Attendance at all sessions is highly  
recommended, but not required.

---

### **Pastoral Care in Our Congregation - We're here for you!**

Sometimes the listening ear or kind and confidential support of a fellow  
parishioner can make all the difference. In addition to Rev. Megan Lynes and Deb  
Weiner, who provide pastoral care to our community, our Lay Pastoral Care Team  
is available to you.

Please reach out to us if you are in need of support: [pastoralcare@walthamuu.org](mailto:pastoralcare@walthamuu.org)  
- and we will respond to you in a timely manner!

Our 'point person' for February is Plum Kennard

Plum Kennard (Chair,) Andy LeCompte, Nancy Lawrence, and Bill VanderClock

---



**Waltham UU Facebook Page**



**Waltham UU Webpage**

Holding your phone's camera over the QR codes above will take you to either the  
First Parish in Waltham webpage or our Facebook page where we hope that you  
will "like" and follow us! These are great ways to stay connected!

---



### **Inclement Weather Procedures for Sundays**

In case of dangerous weather conditions which occurs on or  
leading up to Sunday, we will follow these procedures:

1. A determination on canceling Sunday worship services will be  
made by the worship leader (or, in the case of a pulpit guest, the  
staff worship coordinator) in consultation with the congregation  
president, by 7:30 AM on Sunday.

2. Upon consultation with other worship staff, the service may be moved to zoom-only (originating from the homes of worship leaders).
3. If worship is canceled or if it will be held on zoom, a message will be sent to all on the church mailing list, no later than 8:30 AM.
4. If worship is canceled or will be held on zoom, an update to the church's website, giving information and (if relevant) a zoom link, will be made by 9 AM.
5. In the case of a cancelation of in person worship, all afternoon and evening activities at the church that are sponsored by the church, will also be canceled (and may be rescheduled).

**Light the Steeple**

Honor  
a person, occasion,  
event, or idea

Contact the Office  
✉ [office@walthamuu.org](mailto:office@walthamuu.org)  
☎ 781.893.6240



### When's Your Birthday?

.....

The Membership Committee is helping us celebrate birthdays as a congregation! Let us know your birthday so we can all honor you!

Please email the dates to Gary Morrison:  
[membership.commissioner@walthamuu.org](mailto:membership.commissioner@walthamuu.org)

Justine Watt 2/3  
Jane True 2/4  
Jim Ohm 2/4  
Bethany Klem 2/9  
Brian Anderson 2/11  
Maeve Strafford 2/18  
Leslie Gildersleeve 2/20  
Jim Griffith 2/20

Make an offering plate  
donation before, during, or  
after the service!



**First  
Parish**  
in Waltham

A Welcoming  
Unitarian Universalist Congregation

<http://tiny.cc/Donate2FPW>



## Ministry Staff Team

**Parish Minister**  
Rev. Megan Lynes  
617.276.7655  
[revmeganlynes@walthamuu.org](mailto:revmeganlynes@walthamuu.org)

**Transitional Ministry Associate**  
Deborah Weiner  
617.513.6614  
[deb.weiner@walthamuu.org](mailto:deb.weiner@walthamuu.org)

**Office Administrator /  
Music and Choir Director**  
Emma Campbell  
781.893.6240  
[office@walthamuu.org](mailto:office@walthamuu.org)  
or  
[musicdirector@walthamuu.org](mailto:musicdirector@walthamuu.org)

## Board Members

**President, Board of Managers**  
Deb Jose  
[president@walthamuu.org](mailto:president@walthamuu.org)

**Assistant Treasurer**

**Membership**  
Gary Morrison  
[gary.morrison@walthamuu.org](mailto:gary.morrison@walthamuu.org)

Brenda Asis

Dan DeHainaut  
[asst.treasurer@walthamuu.org](mailto:asst.treasurer@walthamuu.org)

**Clerk**  
Peter Duane  
[clerk@walthamuu.org](mailto:clerk@walthamuu.org)

**Community Outreach  
Commissioner**  
Elisse Ghitelman  
[outreach.commissioner@walthamuu.org](mailto:outreach.commissioner@walthamuu.org)

**Finance**  
Donna VanderClock  
[donna.vanderclock@walthamuu.org](mailto:donna.vanderclock@walthamuu.org)

[brenda.asis@walthamuu.org](mailto:brenda.asis@walthamuu.org)

**Music and Worship Commissioner**  
Bethany Templeton Klem  
[bethany.klem@walthamuu.org](mailto:bethany.klem@walthamuu.org)

**Property**  
Dan Taylor  
[property@walthamuu.org](mailto:property@walthamuu.org)

**Religious Education Commissioner**  
Pam Penton  
[pam.penton@walthamuu.org](mailto:pam.penton@walthamuu.org)

**Treasurer**  
Janet Riley  
[treasurer@walthamuu.org](mailto:treasurer@walthamuu.org)

### **The Mission of First Parish in Waltham**

is to be a caring, inclusive, spiritual community committed to using free inquiry and the power of love to achieve peace, justice, and a sustainable world.

First Parish in Waltham | 50 Church St., Waltham, MA 02452

[Unsubscribe office@walthamuu.org](mailto:office@walthamuu.org)

[Update Profile](#) | [Constant Contact Data  
Notice](#)

Sent by [office@walthamuu.org](mailto:office@walthamuu.org) powered by



Try email marketing for free today!