

# First Parish in Waltham Newsletter

*No matter who you are or  
where you are on life's journey,  
you are welcome here.*

## This Week at . . .



## Upcoming Sunday Services

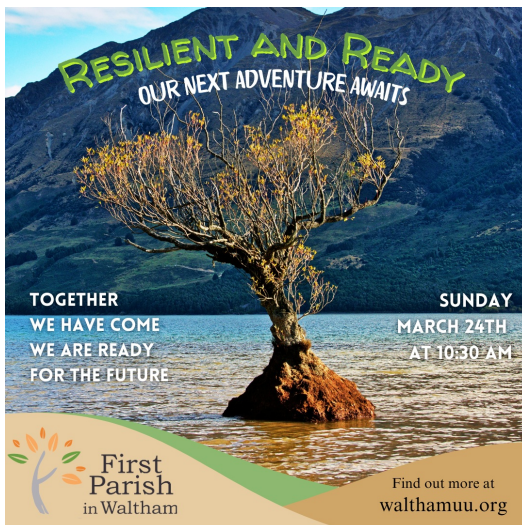
### Upcoming Events

### Messages from Our Community

### Partner Organizations and Other News

### First Parish in Waltham Contacts

## Upcoming Sunday Services



### "Stewardship Sunday - Resilient and Ready!"

Sunday March 24th at 10:30 AM  
Rev. Megan Lynes preaching, a Stewardship Moment by Barry Stearns and special music by Scott Tougas' band.



### "Easter Sunday - Love Wins!"

Sunday March 31st at 10:30 AM  
All Ages Worship with a homily by Rev. Megan Lynes

### New Zoom link for Sunday Services

If you want to join us over Zoom please contact Emma in the office for details [office@walthamuu.org](mailto:office@walthamuu.org)

## Upcoming Events

**STEWARDSHIP DINNER!**  
This Saturday, March 23rd, 2024

**Coffee Hour Treats!**

## 5:30 Whitcomb Hall

**Resilient and Ready** is the theme of this year's stewardship drive. Our congregational energy has been strong through the challenges of the last few years, and we are ready for the next transition - welcoming a new, settled minister. Let's plan to connect in a "First Parish friends and members potluck" this Saturday! It will be a time for conversation and good cheer. We will also enjoy a folk singing performance at 7 pm by Arthur Fox, a board member of In Good Company.

Please let us know whether you can join us and **what potluck item you will bring** by using this signup genius:  
<https://www.signupgenius.com/go/9040B44ADAA23A64-48336122-stewardship>

**We would love to have your presence at the dinner, but if you are unable to attend in person and would like to attend on zoom, please contact Donna VanderClock at [donnnavanderclock@gmail.com](mailto:donnnavanderclock@gmail.com) for the link.**

If you have any questions, please contact Donna or Leslie Gildersleeve at [gildersleeveleslie@gmail.com](mailto:gildersleeveleslie@gmail.com).



**RESILIENT AND READY**  
OUR NEXT ADVENTURE AWAITS

Join us for our Stewardship Dinner!  
Saturday  
March 23rd  
5:30 pm in Whitcomb Hall

Our community's energy has been strong through these past years.  
We are ready for the next transition - welcoming a new, settled minister!  
We need everyone to help us prepare for our next adventure.

Join us for food, fellowship, and fun!

Let us know you are coming and what dish you will bring on our Signup Genius.  
Contact Donna VanderClock at [donnnavanderclock@gmail.com](mailto:donnnavanderclock@gmail.com) or Leslie Gildersleeve at [gildersleeveleslie@gmail.com](mailto:gildersleeveleslie@gmail.com) if you have any questions.

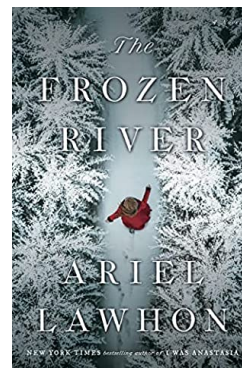
When it's your turn to bring a snack for coffee hour, please bring it either in a container it can be served from, or on your own dish, which you bring home and clean yourself.



**No nuts please, to help those with allergies.**

A - E first Sunday  
F - L second Sunday  
M - S third Sunday  
T - Z fourth Sunday

Special arrangements will be made for fifth Sundays, Such as EASTER Sunday, March 31st, when we invite EVERYONE to bring something yummy to share!



**First Parish Book Club**  
**March 21 - 1 pm**  
**Harrington Room and on line**

*The Frozen River* by Ariel Lawhon

**A Small Group for All!**

Led by Rev. Megan Lynes  
March 13, 20, 27, April 3

This group will meet for four consecutive Wednesdays in the Chapel from **noon to 1:30 pm**. The theme is exploring what it means to live our "one wild and precious life" (Mary Oliver) all while being mortal. We had a great time together on our first week, and there's still a spot for you!

Attendance at all sessions is highly recommended, but not required. If you would like to attend, please email [Rev. Megan](mailto:Rev. Megan)



## FPW Annual Retreat at Ferry Beach May 31 - June 2

Ferry Beach is the home of a Universalist (now UU) retreat center in Saco, ME. The beautiful ocean and the warmth of friends makes for a relaxing and special time together. Our tradition of being together is long-standing but absolutely welcomes newcomers. This year, Rev. Megan and her son Jesse will be attending. Will you come too? Come on your own, bring a friend or your whole family, but either way - you belong.

There is a **10% Discount for early registration** - this will end **Sunday, March 24**. There is also a **20% Discount for first-time attendees** - this is available until the retreat fills up. Speak to Rev. Megan if you need a **scholarship** to attend. We do not want money to be a barrier for your participation in this community weekend. Ferry Beach needs a headcount from us by mid-March. **Sign up soon and help us plan!**

The [Info packet](#) tells you all about the retreat. Contact [retreat@walthamuu.org](mailto:retreat@walthamuu.org) if you have questions. (There is also an option to join us just for Saturday - that form will be available later.)

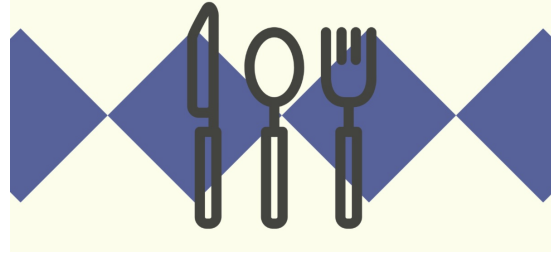
To register, click here:  
[Weekend Registration Form.](#)

## 5th Friday

Please join us for a Shabbat Potluck.  
All are welcome, whatever religious  
background or lack of it.

MARCH 29 | 6.30 PM  
WHITCOMB HALL

RSVP TO JOAN VIA [BONEHAUS207@YAHOO.COM](mailto:BONEHAUS207@YAHOO.COM)



## Spring Fair 2024!! Sunday, April 28th 1- 4 pm

Join us at our annual Spring Fair for Maypole dancing, great music and fun activities with the wider Waltham community. Organized by the RE Team, for one an all!

**We are seeking volunteers to help out:** Do you have a special skill that you can share? Face Painting, Crafting, Tissue flowers, Cookie decorating, Leading Dances or Sing a longs? Please contact Pam Penton to sign up to participate: [pam.penton@walthamuu.org](mailto:pam.penton@walthamuu.org).

*Help us Wake Up the Earth!*

# WARRANT

The legal voters of The First Parish, Universalist-Unitarian, Inc. are hereby notified that a Special Meeting of the Corporation will be held in the sanctuary and via Zoom video conferencing on **Sunday, April 7, 2024**, immediately following the worship service.

**Article I:**

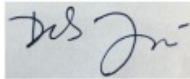
To vote on the recommendations of the Nominating Committee for the delegates to the General Assembly.

**Article II:**

To vote on the recommendations of the Jones Partnership Committee and the Board of Managers for Jones Partnership Fund grants.

**Article III:**

To vote on the recommendation of the Board of Managers and the Finance Commission to purchase an AED (Automatic External Defibrillator) for First Parish in Waltham.



Deborah José  
President, Board of Managers

Peter Duane  
Clerk

## Messages from Our Community



**For This Time  
Thoughts from Deborah Weiner  
Transitional Ministry Associate**

**“Resilient and Ready!”**

I don't know about you, but with the coming of spring (and yes, it's still a little chilly and there may even be a few snowflakes in the air this weekend) I'm feeling some energy in my step and outlook. And that's so with this congregation, too. *Resilient and Ready* is the theme for this year's Annual Stewardship Campaign, which officially launches on Saturday night. I hope you'll be there to gather in celebration of this terrific First Parish in Waltham community. We'll hear some great music, enjoy good food and the company of each other, and get ready to offer our gifts of commitment and connection to help sustain First Parish through the next year - and beyond.

You'll soon be receiving materials from our Stewardship team that are designed to not only share the good news of First Parish but also guide your giving process. It's a great time to think about why we've named our theme *Resilient and Ready*. There's been a lot of resilience here in the last two years; you've really worked hard and dug into the changes:

- ~ voting a new mission statement, to codify the congregation's focus and guide your goals going forward
- ~ developing your first-ever relational covenant, to help articulate the commitments we make to one another, in times of celebration and in conflict
- ~ imagining a set of vision statements which share your focus for the future
- ~ voting in the 8th principle, affirming our values as an anti-racist community

- ~commissioning your search committee to find - in consultation with you all - your next settled minister
- ~ re-engaging with a lay pastoral care team to help support this congregation through good times and in sickness or stress
- ~ offering fun faith formation for all ages with an energetic young adult caregiver who teams up with our RE commissioner and ministry team - in the beautifully painted and restored classrooms
- ~ hiring a committed and friendly facilities coordinator to embody our 'resilient and ready' theme
- ~ forging stronger relationships with Chaplains on the Way, the Waltham Day Care Center, and Congregation B'Nai Or
- ~ welcoming in many other community and service organizations to the church - all of whom are attracted by the excellent facilities and friendly administration of the church
- ~ enhancing outreach to the wider community by debuting an FPW presence on Instagram, improving our newsletter, our social media presence, and our graphics for publicity

...and there's so much more! This list that is just the beginning, and I'd love to hear about the elements you would add! Please share them with Rev. Megan and me - we want to know how YOU celebrate resilience at First Parish. YOU are the ones who make this place the great congregation that it is - and I am absolutely sure that we've only seen the beginning of what you all - together - can do! What a time, and what a great congregation you are. Indeed, resilient and ready!

See you in church.  
Deb

## Church Directory Coming Soon!

*A Message from our Church Administrator, Emma Campbell*



**LOTS of you have asked me to produce a directory.** And it's happening!

You have until the end of March to 'opt in' using the link below. We want to include your correct and updated information, will you help us get it right?

Please click the link to input what you'd like to share. We promise it will take only one minute. And you'll be excited to be able to more easily communicate with your friends and neighbors at First Parish!

<https://forms.gle/JcSTAhN4Vi4bHkmn8>

## Partner Organizations and Other News

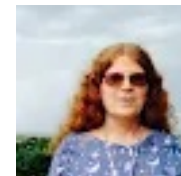


### Seeking flowers for Sunday Services! (And especially on Easter!)

Our tradition fell to the wayside during the pandemic, but we'd love to bring it back! Would you like to make our sanctuary even more lovely on Sundays by bringing flowers (or flowering

### One Thing You Can Do

Our Ministerial Search Team has worked incredibly hard to get us ready to have a ministerial candidate visit our congregation from May 12 - May 19. That will be a crucial time for us to engage, participate, and help out with a variety of events. Please plan to attend both Sundays when the candidate will lead worship, and if possible leave space in your calendar that week to attend various events with our candidate. Please let Brenda Asis know when you're available that week to help out. [brenda.asis@walthamuu.org](mailto:brenda.asis@walthamuu.org). Thank you!



Elisse Ghitelman,  
Outreach Commissioner

plants) for our worship services? You could donate flowers to honor a loved one or to mark a meaningful date, or simply to help beautify our space.

Sign up here (and read all the details) [on this form](#). Thank you in advance!

### Invitation to Membership

Our congregation currently has around 100 official members. We, the members of the congregation own the building, pass bylaws, self govern, articulate and actualize our mission, and support our congregation and its future in time, talent and treasure. *Only members can vote for our next settled minister.* If you have not yet become a member, would you consider what a key role in our future you too could play? Finances should never be a reason not to become a member, because your status is not dependent on what you can give. We'll welcome all new members on April 28th in church. Speak to Rev. Megan or Deb Weiner or a member of our Membership Team if you're interested in signing the official membership book or in hearing more.

**Do you love Gay Pride? Would you like to help advertise First Parish at one of Waltham's exciting family-friendly events?**



The 2024 Pride Event in Waltham will be held on Sunday, June 16th on the Waltham Common from 11 AM to 4 PM. More info is here: <https://www.walthampride.org>.

Last year the First Parish in Waltham had its first table at the event. What a great opportunity to connect with members of our LGBTQ+ community, and share how open and affirming our congregation truly is!

If you would like to participate in 2024, please contact Jodi at [jodimarmontanderson@gmail.com](mailto:jodimarmontanderson@gmail.com) or at coffee hour.



Waltham UU Facebook Page



### Pastoral Care in Our Congregation - We're here for you!

Are you struggling with issues that could use the support of another member of our congregation as a listening ear or to offer support? In addition to Rev. Megan Lynes and Deb Weiner, who provide pastoral care to our community, our Lay Pastoral Care Team is available to you. Our March contact person is Andy LeCompte.

Please reach out to us if you believe we can help. We'd love to hear from you.

[pastoralcare@walthamuu.org](mailto:pastoralcare@walthamuu.org)

### Birthdays Among Us!

The Membership Committee is helping us celebrate birthdays as a congregation! Let us know your birthday so we can all honor you! Please email the dates to Gary Morrison: [membership.commissioner@walthamuu.org](mailto:membership.commissioner@walthamuu.org)

Dan DeHainaut 3/3  
Rev. Megan Lynes 3/6  
Rachel Learned 3/10  
Alan Bone 3/11  
Joan Bone 3/14  
Cynthia Salamanis 3/26  
Brenda Asis 3/28



## Ministry Staff Team

### Parish Minister

Rev. Megan Lynes

617.276.7655

[revmeganlynes@walthamuu.org](mailto:revmeganlynes@walthamuu.org)

### Transitional Ministry Associate

Deborah Weiner

617.513.6614

[deb.weiner@walthamuu.org](mailto:deb.weiner@walthamuu.org)

### Office Administrator /

### Music and Choir Director

Emma Campbell

781.893.6240

[office@walthamuu.org](mailto:office@walthamuu.org)

or

[musicdirector@walthamuu.org](mailto:musicdirector@walthamuu.org)

## Board Members

### President, Board of Managers

Deb Jose

[president@walthamuu.org](mailto:president@walthamuu.org)

### Assistant Treasurer

Dan DeHainaut

[asst.treasurer@walthamuu.org](mailto:asst.treasurer@walthamuu.org)

### Clerk

Peter Duane

[clerk@walthamuu.org](mailto:clerk@walthamuu.org)

### Community Outreach Commissioner

Elisse Ghitelman

[outreach.commissioner@walthamuu.org](mailto:outreach.commissioner@walthamuu.org)

### Finance

Donna VanderClock

[donna.vanderclock@walthamuu.org](mailto:donna.vanderclock@walthamuu.org)

### Membership

Gary Morrison

[gary.morrison@walthamuu.org](mailto:gary.morrison@walthamuu.org)

Brenda Asis

[brenda.asis@walthamuu.org](mailto:brenda.asis@walthamuu.org)

### Music and Worship Commissioner

Bethany Templeton Klem

[bethany.klem@walthamuu.org](mailto:bethany.klem@walthamuu.org)

### Property

Dan Taylor

[property@walthamuu.org](mailto:property@walthamuu.org)

### Religious Education Commissioner

Pam Penton

[pam.penton@walthamuu.org](mailto:pam.penton@walthamuu.org)

### Treasurer

Janet Riley

[treasurer@walthamuu.org](mailto:treasurer@walthamuu.org)

### **The mission of First Parish in Waltham**

is to be a caring, inclusive, spiritual community committed to using free inquiry and the power of love to achieve peace, justice, and a sustainable world.

Stay connected on our Website, Facebook Page, or Instagram!  
Like and follow us to get updates and news!



Notice

Sent byoffice@walthamuu.orgpowered by



Try email marketing for free today!